



Family Health Care Tips

Frequently Asked Questions About EPSDT

13

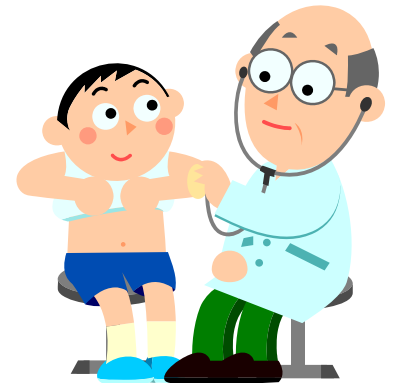
Parents Reaching Out provides resources that focus on helping families make informed decisions about the care and education of their children. Keeping your family healthy means knowing how to navigate the health care system and talk with your doctor or other providers. We hope these tip sheets will give you the information you may need to access the best, most cost-effective medical and related services to meet the needs of your family.

What is EPSDT?

EPSDT stands for Early Periodic Screening, Diagnostic, and Treatment. In New Mexico every child under the age of twenty-one and covered by the Medicaid State Plan program is eligible for EPSDT services. These services are required by the federal government and include preventive check-ups, diagnostic tests and direct services, such as therapies. EPSDT services must be medically necessary and are intended to improve or maintain the health of the individual.

What should I know about EPSDT?

Sometimes people think that EPSDT has its own special set of eligibility criteria, but that is not true. EPSDT is a required part of the State Medicaid Plan and has the same eligibility standards. Therefore every child with a Medicaid card is eligible to receive EPSDT services. In New Mexico there are three types of screening done by Primary Care Providers (PCPs). The first is an initial screening which usually occurs when a child first enters the Medicaid system. The second type of screening is called a periodic screen and occurs at specific intervals during a child's life. You may know these as Well Child Check-ups or Tot-to-Teen Health Checks. During these periodic screens, your child will receive his immunizations and age-specific health screenings like vision and hearing testing. The third type of EPSDT screen is called an interperiodic screen. This screen can happen at any time and occurs by simply bringing your child in to see their PCP when they are ill.



What does EPSDT offer?

EPSDT is required to provide medically necessary services to all children and youth from birth up to age 21. Some of these services under the direction of the child's PCP may include; Physical Therapy, Occupational Therapy, Speech and language pathology, private duty nursing, wheelchairs, nebulizers, case management, vision care, dental, diapers, and more.

Who do I contact for more information on EPSDT services?

If you would like more information about EPSDT services you can contact New Mexico's Human Services Department Medical Assistance Division at 888-997-2583. If your child is enrolled in Salud! managed care program, you can also contact Lovelace at 888-232-2750, Presbyterian at 888-977-2333, or Molina at 800-580-2811.

"Health Care Tips" are publications of Parents Reaching Out and developed under a grant from the Center for Medicare and Medicaid Services (CMS). Views expressed do not necessarily represent their policy and should not be assumed to be an endorsement by the Center for Medicaid and Medicare Services.